



# Prism

Precision Functional Testing Made Easy

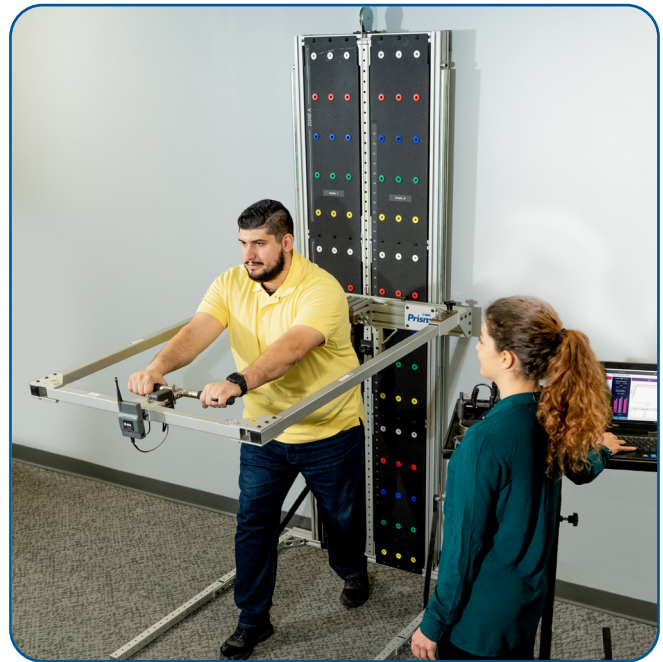
# Prism

Perform precise functional testing  
– in the clinic or on the jobsite

Prism is the unique new testing system designed to meet your specific needs. Fully functional and FCE-ready with minimal space requirements, the lightweight Prism is easy to set up and use in the clinic or at the jobsite.

Drive new referrals from employers and payers. Give them superior graphical and narrative reporting with all the information they need to make critical decisions on hiring, workers comp, and related issues.

Prism improves the consistency of employment testing so that all candidates can be tested with the exact same objective protocol for better legal defensibility.



TRANSPORTABLE, FCE-READY SYSTEM

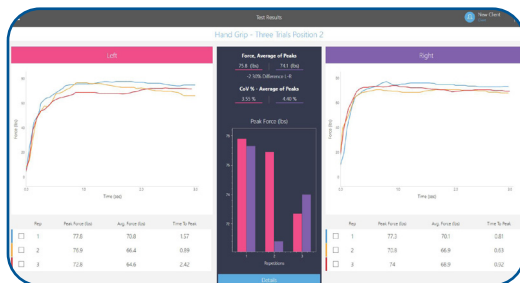


GRIP STRENGTH



RANGE OF MOTION

## EASY EVALUATIONS WITH AUTOMATED REPORTING



STRENGTH AND RANGE OF MOTION TESTING



CONTINUOUS HEART RATE MONITORING

BTE facilitates clinical precision and excellence with evidence-based, truly functional evaluation. We empower clinicians to simulate real-life tasks with the highest degree of precision.

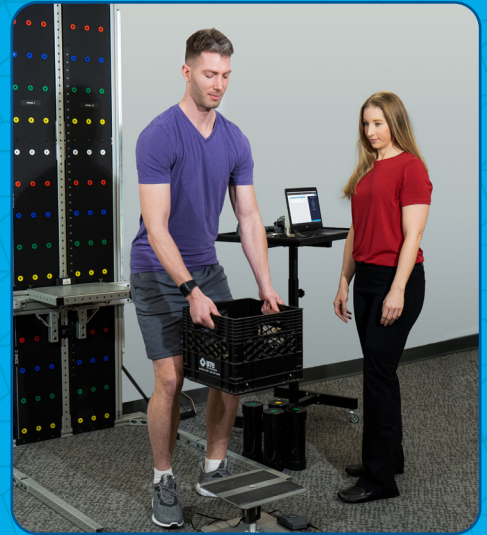
Unlike traditional evaluation methodologies, BTE Prism allows you to replicate virtually any motion, with a multitude of task-specific tests spanning job duties and activities of daily living.

This provides critical information to referrers including doctors, employers, and case managers, giving them the objective data needed to justify treatment and employment decisions.

## Lifting

Calibrated weights allow for lifts of 10 lbs to 105 lbs in 5-lb increments. The weight amount is checked at every lift repetition removing potential for operator error.

Track quantity of lifts, time between lifts, and total time to complete a lifting set, all without error prone manual data entry.



## Push and Pull

Perform push and pull capacity tests up to 300 lbs.

Measure push and pull strength at any height between 24 inches and 84 inches at 1.5-inch increments.

## Pinch and Grip

Measure and record hand grip strength from 1 lb to 250 lbs.

Measure and record pinch strength from 1 lb to 45 lbs.



## Functional Range of Motion (FROM)

Perform a range of pick and place, manual dexterity, mental agility, and range of motion tests in a variety of work positions.

Measure and record time to complete FROM tasks for easy comparison with requirements.



## Powered by BTE Lumen

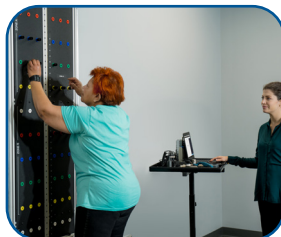
Supercharge your practice with BTE Lumen – the ground-breaking new software platform for the modern clinic. BTE Lumen makes physical evaluations easier than ever with its streamlined workflow designed to get you going, fast.



Prism gives you the power to perform objective strength and range of motion testing quickly and easily – in your clinic or at the jobsite.



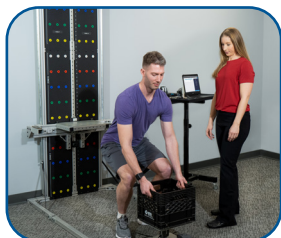
PULL STRENGTH



FUNCTIONAL RANGE OF MOTION



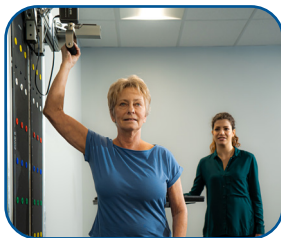
PUSH STRENGTH



REAL LIFE LIFTING



ROM (DUAL INCLINOMETER)



PULL DOWN



ROM (GONIOMETER)



PINCH STRENGTH

## KEY FEATURES

- Precise data acquisition for strength and range of motion evaluations
- Automatic report generation with graphs and summaries including Coefficient of Variation
- Create and store your own testing protocols to match your preferred method of testing
- Compares job candidate's performance to actual job demands for a clear pass/fail
- FROM compares results to MTM standards
- Calibrated digital instruments ensure data integrity
- Integration with continuous heart rate monitoring during evaluations
- Includes laptop with easy to use BTE Lumen software
- Legs fold up for smaller storage footprint when not in use

## SPECIFICATIONS

- Height: 96" (244 cm)
- Width: 39" (100 cm)
- Depth: 62" (158 cm)
- Folded/Storage Depth: 24" (61 cm)
- US/Canada Electrical Requirements: 110-120 Volts, 50-60 Hz, 2 Amps

**Learn more about how you can benefit from better evaluations with BTE Prism. Call us today!**